



Glenmore Road NW3

Parkheath  
*Sold on Service*





**Glenmore Road, NW3**  
**Asking Price £775,000**  
**Share of Freehold**

- A stylish 2 double bedroom apartment, full of character
- High ceilings, wood flooring, feature fireplace, coving and sash windows
- Set in attractive red brick period conversion
- Entire first floor, 678 sq ft approx
- Impressive 17ft reception
- Separate 10ft kitchen with a window
- 13ft main bedroom with storage plus 11ft second bedroom
- Share of freehold
- No on going chain
- Moments from all Belsize Park amenities



Belsize Park/Hampstead  
 208 Haverstock Hill  
 NW3 2AG  
 Sales 020 7431 1234  
 Lettings 020 7431 3104  
[nw3@parkheath.com](mailto:nw3@parkheath.com)

South/West Hampstead  
 192 West End Lane  
 NW6 1SG  
 Sales & Lettings  
 Tel 020 7794 7111  
[192@parkheath.com](mailto:192@parkheath.com)

Kensal Rise  
 54-56 Chamberlayne Rd  
 NW10 3JH  
 Tel 020 8960 4845  
[kensal@parkheath.com](mailto:kensal@parkheath.com)

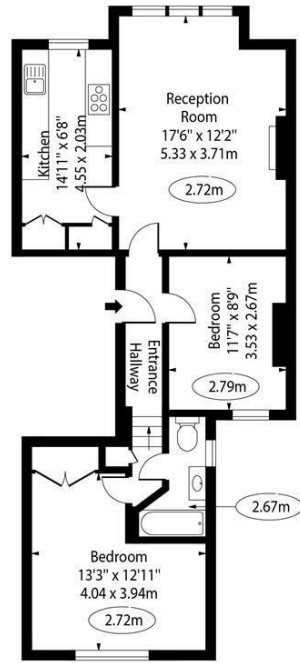
Property Management  
 192 West End Lane  
 NW6 1SG  
 020 7433 6174  
[pm@parkheath.com](mailto:pm@parkheath.com)

[www.parkheath.com](http://www.parkheath.com)

**Parkheath**  
*Sold on Service*

**Camden Tax band E**

Glenmore Road, NW3

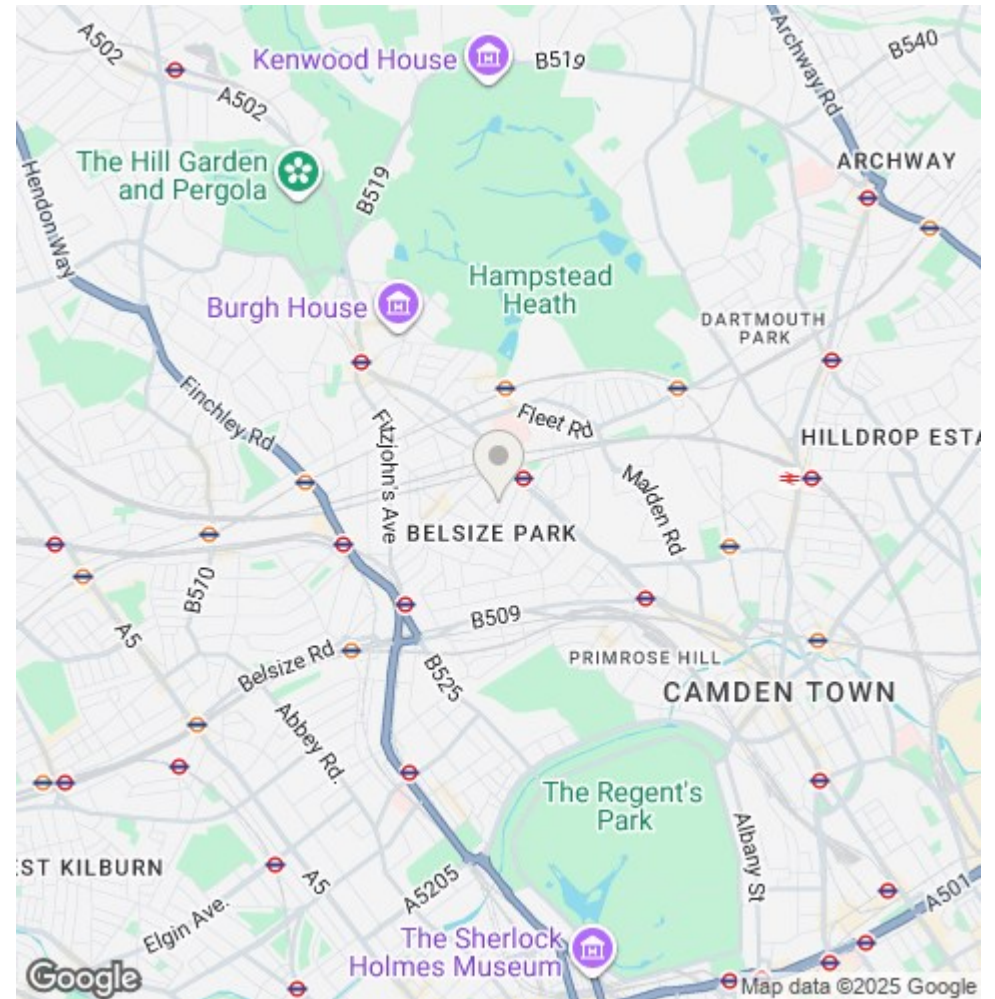


First Floor

Approx Gross Internal Area 679 Sq Ft - 63.08 Sq M

For Illustration Purposes Only - Not To Scale Floor Plan by www.nogaphotostudio.com Ref: No.53036

This floor plan should be used as a general outline for guidance only. Any intending purchaser or lessee should satisfy themselves by inspection, searches, enquiries and full survey as to the correctness of each statement. Any areas, measurements or distances quoted are approximate and should not be used to value a property or be the basis of any sale or let.



The particulars do not constitute part of an offer or contract. The particulars, including text, photographs and plans, are for the guidance only of prospective purchasers/tenants and must not be relied upon as statements of fact. The descriptions provided therein represent the opinion of the author and whilst given in good faith should not be construed as statements of fact. Nothing in these particulars shall be deemed a statement that the property is in good condition or otherwise or that any services or facilities are in good working order. All measurements are approximate